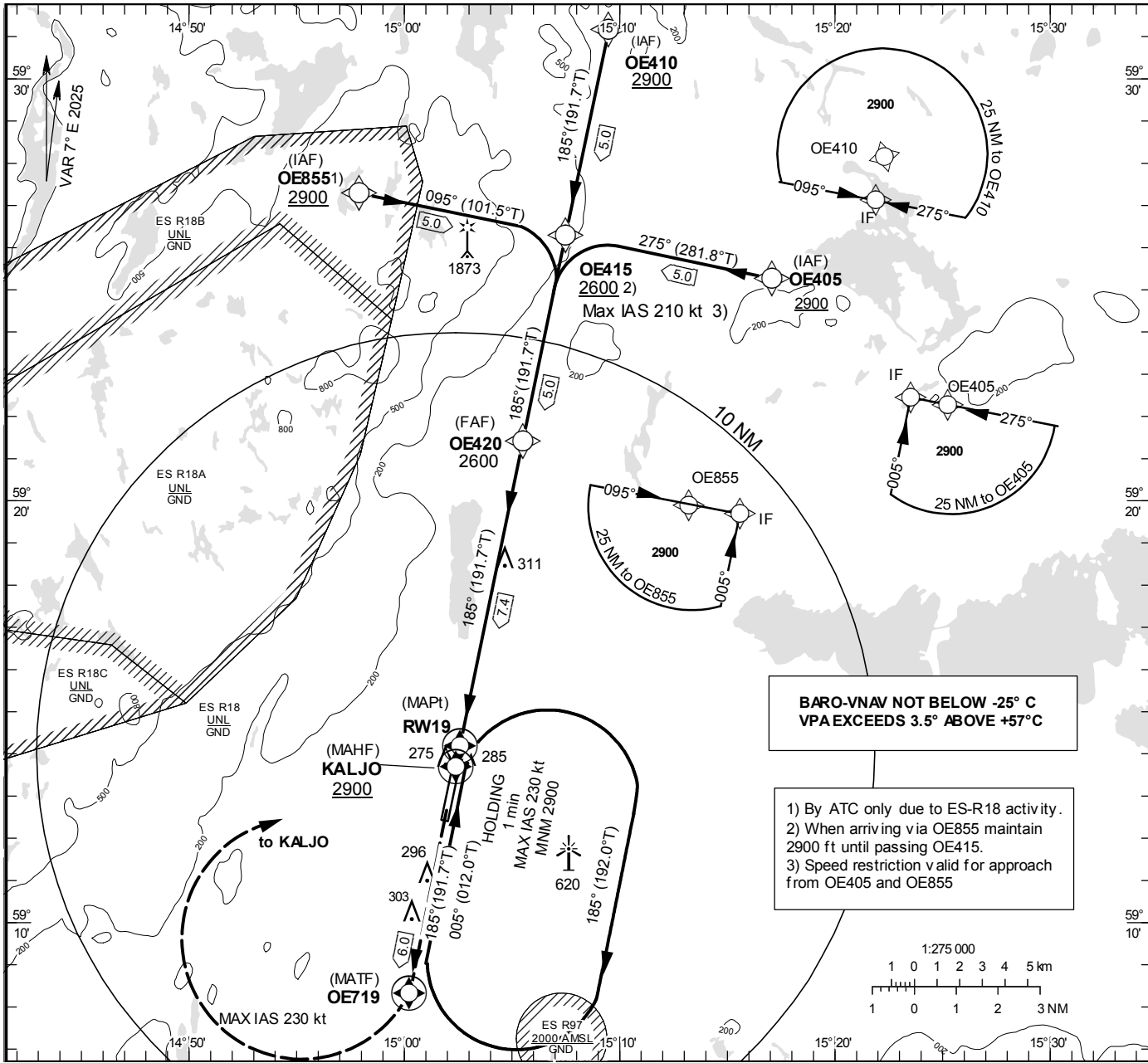


INSTRUMENT
APPROACH
CHART – ICAO

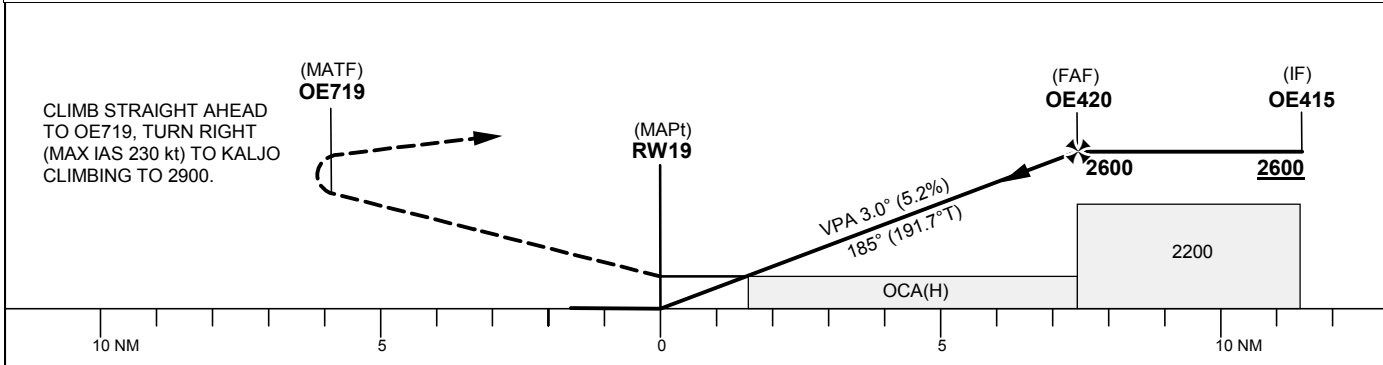
THR ELEV 191.1 ft, AD ELEV 192 ft
OCH are related to THR.
BRG are MAG (True).
ALT, HGT and ELEV in ft.

ÖREBRO TOWER 120.280

EGNOS Ch 41191 E 19A



TA 5000 ft AMSL RDH 54 ft Missed approach MAX IAS 230 kt



OCA (H)						Final approach	Distance FAF-MAPt 7.4 NM						
Cat of ACFT	A	B	C	D	D _L	Dist to RW 19	2	3	4	5	6	7	
LPV	405 (214)	417 (226)	426 (235)	436 (245)		ALT	880	1200	1520	1840	2160	2470	
LNAV/VNAV	415 (224)	428 (237)	436 (245)	446 (255)		GS	kt	80	100	120	140	160	180
LNAV			570 (380)			Rate of descent	ft/min	425	530	635	745	850	955
Circling	600 (410)	690 (500)	1020 (830)										

CHANGE: Editorial

ÖREBRO

RNP RWY 19 via OE405

Path Desc	Waypoint Identifier	Fly-over	Course °M(°T)	Dist (NM)	Turn Dir	Altitude	Speed	VPA/ RDH	Rec Navaid	Navigation Specification
IF	OE405	-	-	-	-	+2900	-	-	-	RNP APCH
TF	OE415	-	275°(281.8°)	5.0	L	+2600	-210	-	-	RNP APCH

RNP RWY 19 via OE410

Path Desc	Waypoint Identifier	Fly-over	Course °M(°T)	Dist (NM)	Turn Dir	Altitude	Speed	VPA/ RDH	Rec Navaid	Navigation Specification
IF	OE410	-	-	-	-	+2900	-	-	-	RNP APCH
TF	OE415	-	185° (191.7°)	5.0	-	+2600	-	-	-	RNP APCH

RNP RWY 19 via OE855

Path Desc	Waypoint Identifier	Fly-over	Course °M(°T)	Dist (NM)	Turn Dir	Altitude	Speed	VPA/ RDH	Rec Navaid	Navigation Specification
IF	OE855	-	-	-	-	+2900	-	-	-	RNP APCH
TF	OE415	-	095° (101.5°)	5.0	R	+2900	-210	-	-	RNP APCH

Path Desc	Waypoint Identifier	Fly-over	Course °M(°T)	Dist (NM)	Turn Dir	Altitude	Speed	VPA/ RDH	Rec Navaid	Navigation Specification
IF	OE415	-	-	-	-	-	-	-	-	RNP APCH
TF	OE420	-	185° (191.7°)	5.0	-	@2600	-	-	-	RNP APCH
TF	RW19	Y	185° (191.7°)	7.4	-	@245	-	-3.0/54	-	RNP APCH
TF	OE719	Y	185° (191.7°)	6.0	-	-	-	-	-	RNP APCH
DF	KALJO	Y	-	-	R	+2900	-230	-	-	RNP APCH

ESOE Holding KALJO

Path Desc	Waypoint Identifier	Fly-over	Course °M(°T)	Dist (NM)	Turn Dir	Altitude	Speed	VPA/ RDH	Rec Navaid	Navigation Specification
HM	KALJO	Y	005°(012.0°)	-	R	+2900	-230	-	-	RNAV 1

FAS Data Block

RNP RWY 19

Input data

Operation Type	0
SBAS Provider	1
Airport Identifier	ESOE
Runway	19
Runway Letter	0 (None)
Approach Performance Designator	0
Route Indicator	
Reference Path Data Selector	0
Reference Path Identifier	E19A
LTP/FTP Latitude	591410.7025N
LTP/FTP Longitude	0150234.9030E
LTP/FTP Ellipsoidal Height (metres)	86.9
FPAP Latitude	591227.1680N
Delta FPAP Latitude (seconds)	-103.5345
FPAP Longitude	0150153.1705E
Delta FPAP Longitude (seconds)	-41.7325
Threshold Crossing Height	54.0
TCH Units Selector	0 (feet)
Glidepath Angle (degrees)	3.00
Course Width (metres)	105.00
Length Offset (metres)	0
HAL (metres)	40.0
VAL (metres)	50.0

Output data

Data Block	10 05 0F 13 05 13 00 00 01 39 31 05 1D E5 6B 19 2E AD 74 06 65 17 23 D7 FC F7 B9 FE 1C 02 2C 01 64 00 C8 FA C1 46 AE 14
Calculated CRC Value	C146AE14

Required Additional Data

ICAO Code	ES
LTP/FTP Orthometric Height (metres)	58.3